




Affiliated to GGSIP University, New Delhi  
Approved by AICTE & Council of Architecture

# DELHI TECHNICAL CAMPUS GREATER NOIDA

## EVENT REPORT



Delhi Technical Campus

### Live Interactive Webinar on: Artificial Intelligence

**WEBINAR HIGHLIGHTS**

- All about AI
- Application of AI
- Impacts of AI in Daily life

**24th June  
2:30 PM**

*Speaker*  
**Sweta Kumari**  
*5+ Years of Teaching experience on Unacademy as Verified Educator for GATE CS & IT, teaches all Core CS IT subjects, Presented Research paper, 2 Times Awardee of Perfect Presence Educator, Done B.TECH From GSSIPU*

**CORDINATOR**  
**Dr. Mohd Atif Wahid**  
**Dr. Nidhi Jolly**  
**Dr. Harpreet Kaur**

**Event: WEBINAR ON: ARTIFICIAL INTELLIGENCE**

**Date: 24<sup>th</sup> June, 2022**

**Time: 2:30 – 4 PM**

Our college "Delhi Technical Campus" in collaboration with a renowned online education platform "Unacademy" had organized a "Live interactive webinar on: Artificial Intelligence" on 24<sup>th</sup> June, 2022 at 2:30 PM as a part of weekly Research Cell Event. The session was held online and the expert, "Ms. Sweta Kumari", who is also an experienced educator, delivered an informative session. Dr Mohd. Atif Wahid, Dr. Harpreet Kaur and Dr. Nidhi Jolly from Research cell of Delhi Technical Campus, coordinated the online webinar successfully.

All the participants were briefed about the steps to login into the online session. Further, more than 140 B.Tech. Students from first year enthusiastically participated and get benefitted from the very interactive and knowledgeable webinar.

The highlights from the webinar:

- All about AI.
- Applications of AI.
- Impacts of AI in daily life.

At the end, the feedback forms was filled by the participants. A few glimpses from the event are attached herewith.



# ARTIFICIAL NEURAL NETWORK

## NEURAL NETWORK

- ✓ Neural networks are parallel computing devices used to make a computer model of the brain.
- ✓ The main objective is to develop a system to perform various computational tasks faster than the traditional systems.
- ✓ These tasks include pattern recognition and classification, approximation, optimization, and data clustering.

## APPLICATIONS

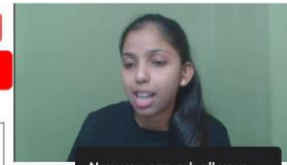
### Applications :

1. Speech Recognition
2. Character Recognition
3. Human Face Recognition
4. Signature Verification

## ARTIFICIAL NEURAL NETWORK

- ✓ **What is Artificial Neural Network?**  
ANNs are also named as "artificial neural systems," or "parallel distributed processing systems."
- ✓ ANN acquires a large collection of units that are interconnected in some pattern to allow communication between the units.
- ✓ These units, also referred to as nodes or neurons, are simple processors which operate in parallel.
- ✓ Every neuron is connected with other neuron through a connection link.
- ✓ Each connection link is associated with a weight that has information about the input signal.
- ✓ weight usually excites or inhibits the signal that is being communicated.
- ✓ Each neuron has an internal state, which is called an activation signal.

wgt



Now you can ask all your doubts during a live class right here

Adeeba, Archi & 18 others joined

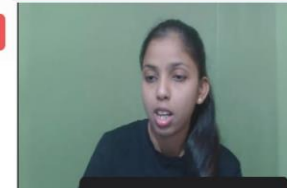
Sweta: unacademy.com /@hellosonu01

Anjali, Abhishek joined

Type message

## Let's see how some popular social media websites or apps use Artificial Intelligence:-

- ✓ **Instagram:** On Instagram, AI takes into account your interests and the accounts you follow to select which posts appear in your Explore tab.
- ✓ **Facebook(meta):** Artificial Intelligence is being employed, as well as a technique is known as DeepText. Facebook can better interpret discussions using this technology. It may be used to automatically translate posts between languages.
- ✓ **Twitter:** Twitter uses AI for fraud detection, propaganda removal, and hateful content removal. Twitter also uses AI to suggest tweets to users depending on the types of tweets they engage with.



Now you can ask all your doubts during a live class right here

Yashasvi, Shikha & 18 others joined

Tuna, Adityan joined

Sweta: unacademy.com /@hellosonu01

Type message